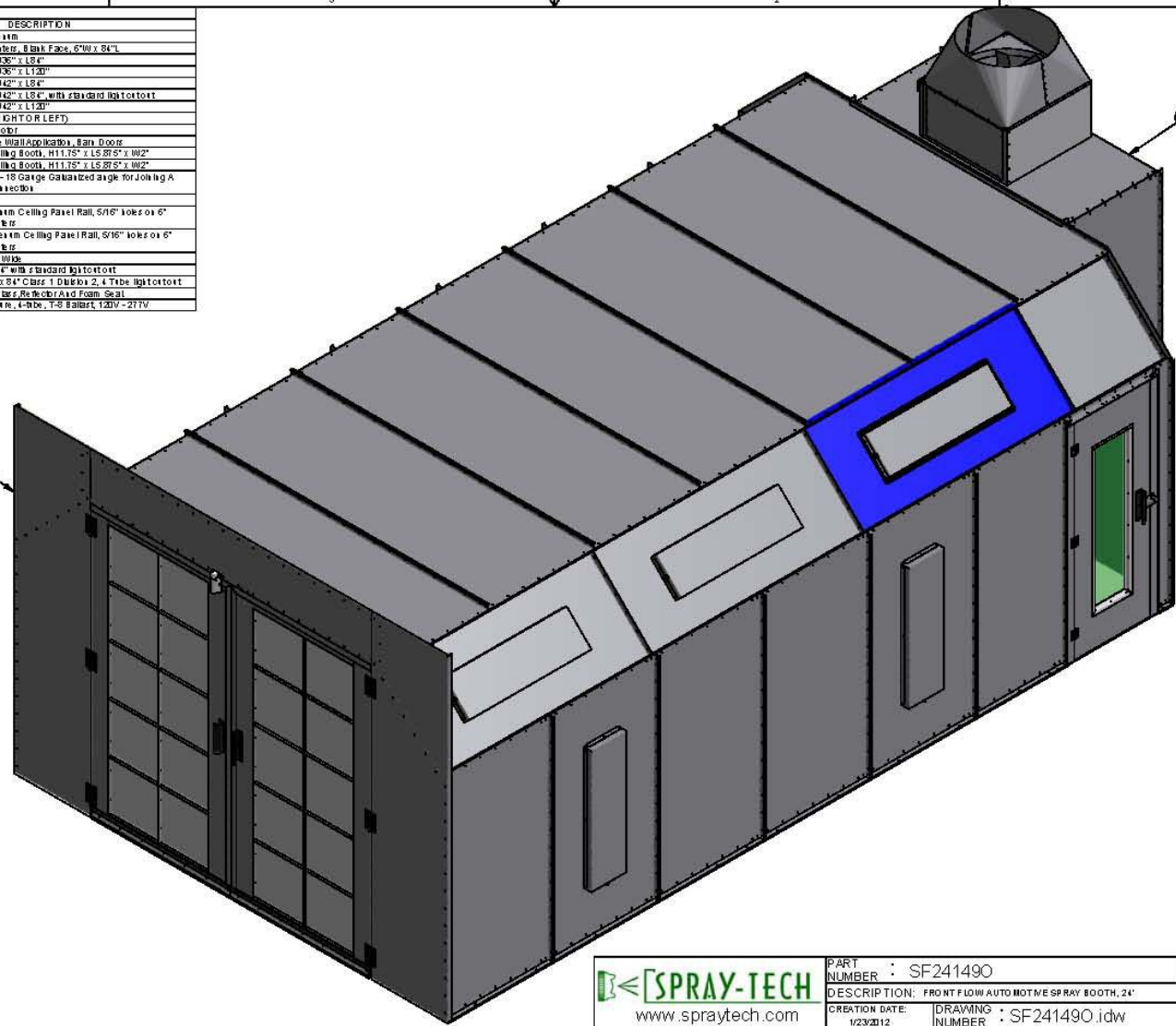



ITEM	QTY	PART NUMBER	DESCRIPTION
1	1	RW1420SE	3 x 14 Rigid Wall to Side Panel
2	1	A3084D1	A Type, Bor Hoks @ 6" Ceiling, 8 Bak Face, 6" W x 84" L
3	2	A3084D1	A Type, Bor Hoks, 8 Bak, 0036" x 184"
4	1	A36120D1	A Type, Bor Hoks, 8 Bak, 0036" x 1120"
5	7	A42084D1	A Type, Bor Hoks, 8 Bak, 0042" x 184"
6	1	A42084D5	A Type, Bor Hoks, 8 Bak, 0042" x 184", with Standard Inlet/outlet
7	6	A42120D1	A Type, Bor Hoks, 8 Bak, 0042" x 1120"
8	1	DA360820300-RL	Handdoor Assy-New Style (RIGHT OR LEFT)
9	1	FAN321	FAN 321 shown with SHP Motor
10	1	FC14126D3	Face 14W x 10 SH for Shop Wall Application, Rain Door
11	1	G466110S	G466110S for floor or bag booth, 111.75" x 15.875" x .002"
12	1	G466110S-MR	G466110S for floor or bag booth, 111.75" x 15.875" x .002"
13	1	JAD2036D1	1875" x 1875" x .35.9" bag - 18 Gauge Galvanized angle for joining a panel and panel to panel connection
14	2	JF2008D1	Floor Rail, 6 inches long
15	1	JF2048D1	J Type, 48" Floor Rail or Plexim Ceiling Panel Rail, 5/16" locks on 6" ceiling, .5" locks on 42" ceiling
16	4	JF2120D1	J Type, 120" Floor Rail or Plexim Ceiling Panel Rail, 5/16" locks on 6" ceiling, .5" locks on 42" ceiling
17	2	K04036S1	K Type, Gable Panel, 36" wide
18	5	K04084S1	K Type, Gable Panel 34" x 84" with Standard Inlet/outlet
19	1	K04084S2	K Type, Gable Panel 34" x 84" Cabz 1 Dimple 2, 4 Tube Inlet/outlet
20, 21	9	L40100	L-Tube T8 Light Fix. Kit w/ Glass Reflect Aid Foam Seal
22	1	L4210S	Cabz 1, Dimple 2 Light Fix re. 4-tube, T-8 Ballast, 120V - 277V



 www.spraytech.com	PART NUMBER : SF241490	MATERIAL :	FINISH :	QTY :
	DESCRIPTION: FRONT FLOW AUTO MOUNTED SPRAY BOOTH, 24'			
	CREATION DATE: 1/23/2012	DRAWING NUMBER : SF241490.idw		