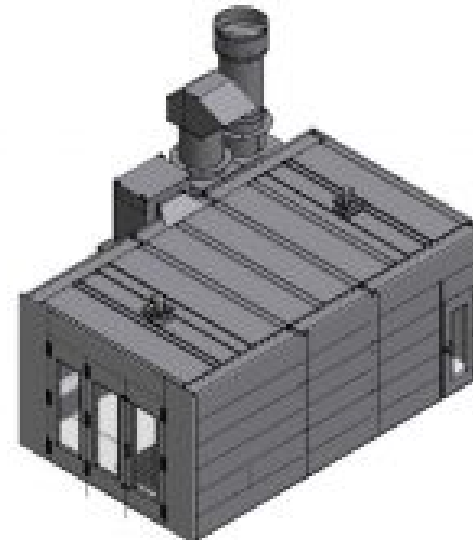
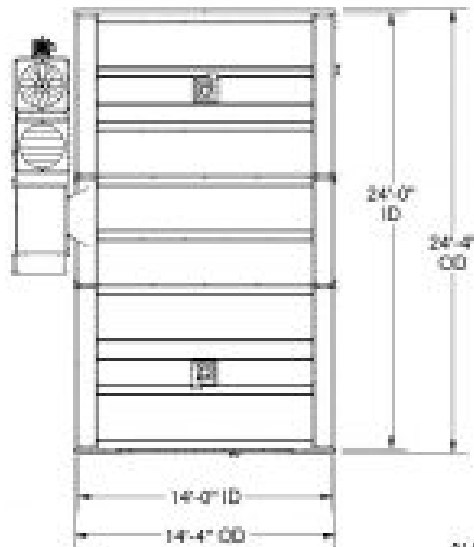


### ELECTRICAL REQUIREMENT

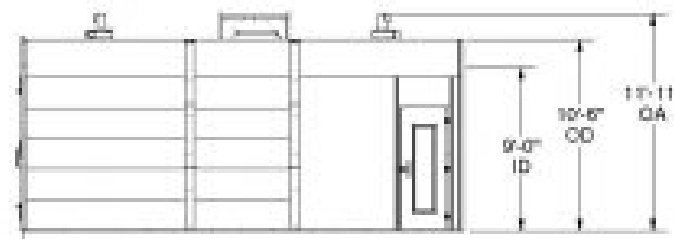
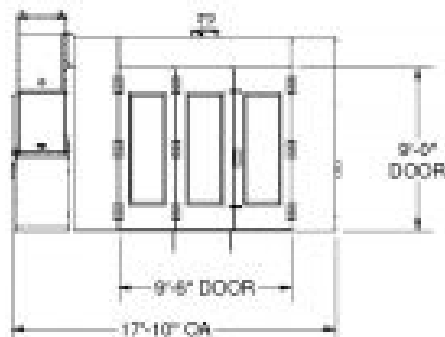
# STANDARD CIRCUIT	VOLTS	TYPE OF CIRCUIT
12 TO 4 1/2" PANEL LIGHTS (STANDARD)	120/240V	60 HZ SINGLE PHASE
12 1/2" GFI CIRC. BREAK	120/240V	60 HZ SINGLE PHASE



### SPRAY BOOTH REQUIREMENTS:

- (1) AN EXHAUST SUPPRESSION SYSTEM SHALL BE INSTALLED BY LOCAL CONTRACTOR (SEPARATE DRAWING)
- (2) SPRAY BOOTH TO BE INSTALLED PROTECTED (CONCRETE OR METAL) WITH 2" MIN. THICKNESS OF WALL OR PARTIAL, STRENGTH EQUIVALENT (SHEATH AND CONCRETE)
- (3) AIR SHALL EXHAUST AT MIN 4' OFF FLOOR TO AVOID FLAMMABLE VAPOUR
- (4) AIR EXHAUST SYSTEM SHALL BE SET UP TO OPERATE AT ALL TIMES WHEN EXHAUST SYSTEMS ARE OPERATING AND FLOW IS REQUIRED THE FLOW RATE TO AVOID OVERHEATING OF AIR CONTROLS AND PREVENTING MATERIAL RESIDUE TO BE COLLECTED
- (5) AIR VELOCITY SHALL BE DESIGNED, INSTALLED AND MAINTAINED OR THAT INSURE THAT AIR VELOCITY ABOVE THE AIR EXHAUSTION OF THE SPRAY BOOTH SHALL BE AT LEAST 100 FPM (SEE LOCAL CODES)
- (6) ALL ELECTRIC WIRING SHALL BE INSTALLED IN CONDUIT (SEE LOCAL CODES) OR NON-FLAMMABLE CONDUIT SHALL BE USED WITH SUCH MATERIAL
- (7) WELDS SHALL NOT EXPOSE EXHAUST DUCTS OR EXHAUST DUCTS TO EXHAUST SYSTEMS (SEE LOCAL CODES)
- (8) ELECTRICAL GROUNDING IS REQUIRED FOR METAL PARTS OF SPRAY BOOTH UNLESS THEY ARE INSULATED FROM CONTACT WITH EARTH (SEE LOCAL CODES) IN ACCORDANCE WITH THE ELECTRICAL CODE
- (9) ELECTRICAL INTERLOCK IS REQUIRED SO THAT SPRAY GUN CAN BE OPERATED ONLY WHEN THE EXHAUST FAN IS RUNNING OR AS APPROVED
- (10) NEAR THE BOOTH ELECTRICAL SHALL BE CLASS 1 OR 1
- (11) ALL ELECTRICAL COMPONENTS ARE TO BE IP 65
- (12) ELECTRICAL WIRING SHALL BE CONSIDERED CLASS DIVISION 2 OF THE CODES
- (13) ALL EXHAUST OR RELIEF VALVES SHALL BE COVERED WITH LARGE LETTERING AND CONTRASTING BACKGROUND SHALL BEAT BREAKAWAY (SEE LOCAL CODES)
- (14) ALL BOOTH MUST ON EXHAUST SYSTEMS AND EXHAUST DUCTS
- (15) SPRAY ENCLOSURE TECHNOLOGICAL TO SPRAY BOOTH ARE ETL LISTED UNDER PRODUCT NUMBER 14811 (SEE LOCAL CODES) AND APPROVED UNDER NUMBER ETL LISTED UNDER 14811 (SEE LOCAL CODES)
- (16) FLOOR MUST BE FULLY INCLUDED (A-10)

ALL DIMENSIONS ARE FOR REFERENCE ONLY AND SUBJECT TO CHANGE



 www.spraytech.com	PART NUMBER : TIDDP241 DESCRIPTION : DRAWING CODE : DATE :	PREPARED BY : DATE :	CHECKED BY : DATE :	APPROVED BY : DATE :
	TIDDP241-Spec.kdw			